

GI-NET

- ❑ Locally invasive tumors
- ❑ High metastatic potential

- ❑ Chemo-RT sensitive tumors
- ❑ No standard treatment approach

GI-NET

RADIATION THERAPY (CMT)

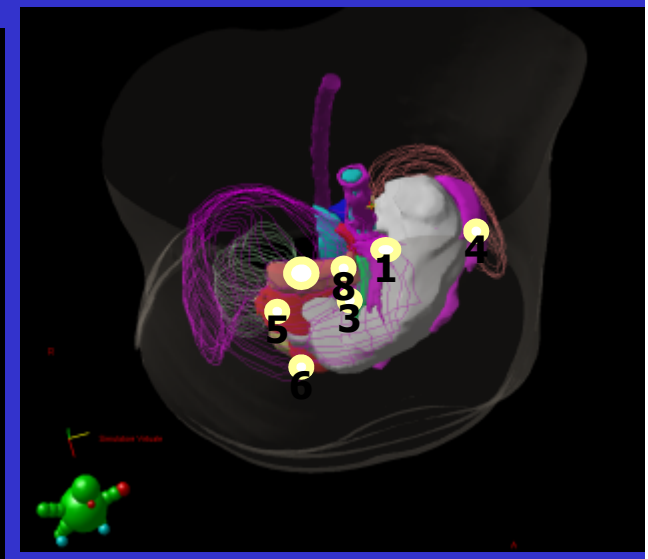
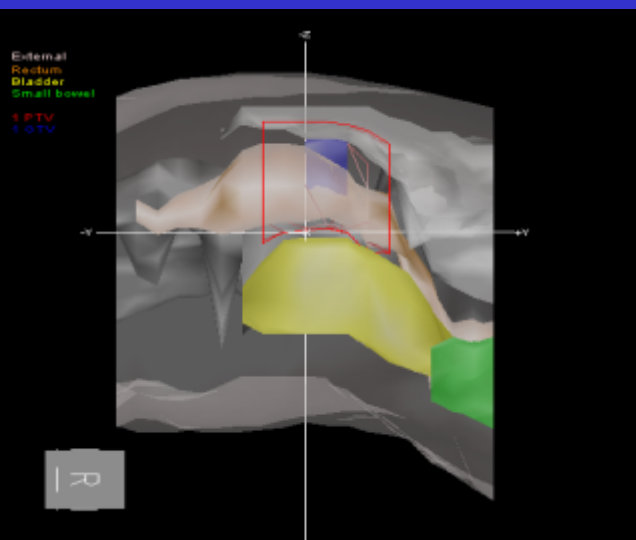
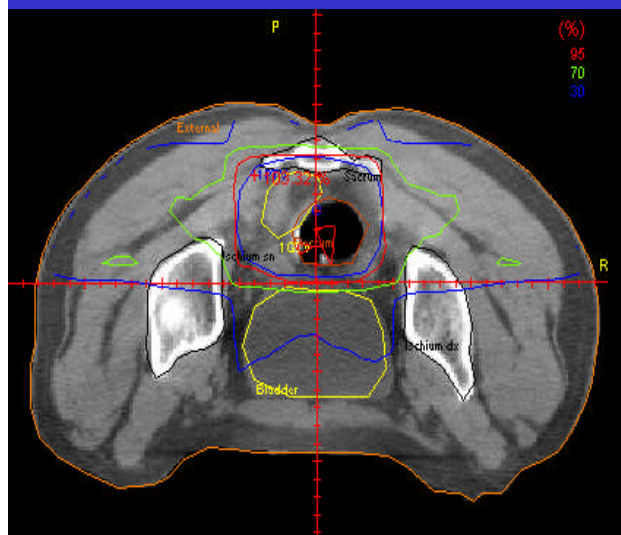
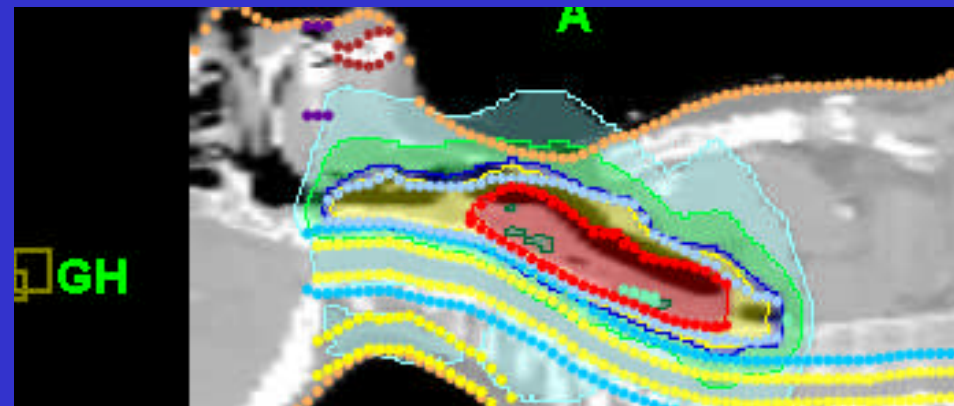
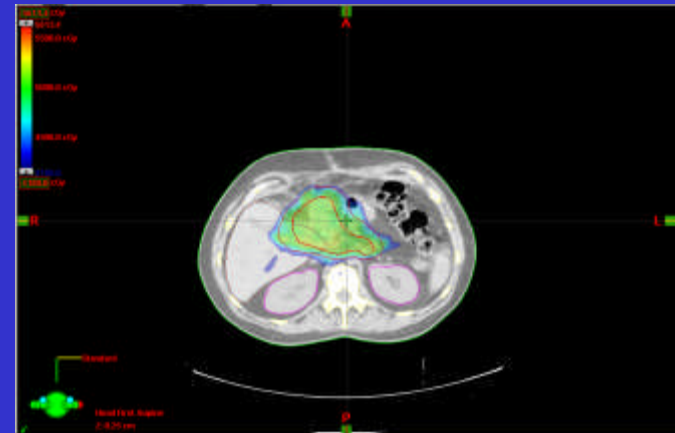
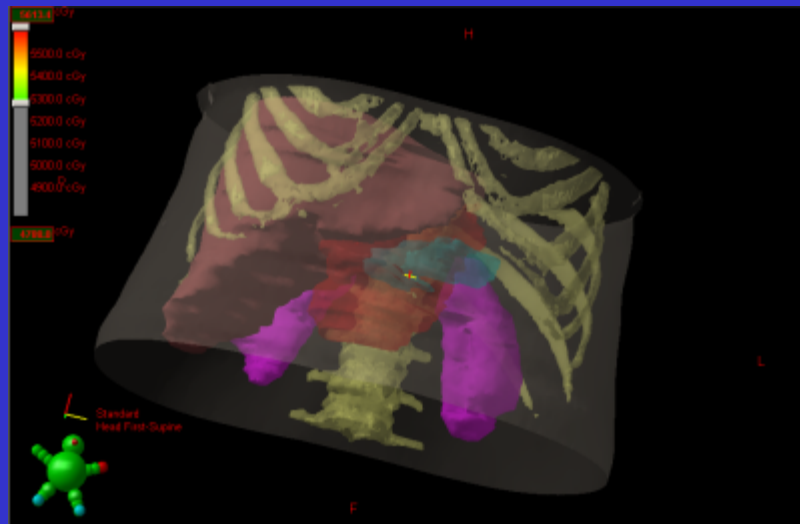
Limited Disease

Curative Intent

Extended Disease

Palliation

GI-NET 3D-CRT/IMRT-Tomo



GI-NET

- ❑ Highly aggressive disease
(dismal prognosis)
- ❑ Optimal use of available T. options
(crucial issue)
- ❑ RT play a role in CMT
(cure/palliation)

