

Tumori neuroendocrini gastrointestinali

Imaging
medico-nucleare

Commento

espressione dei SSR

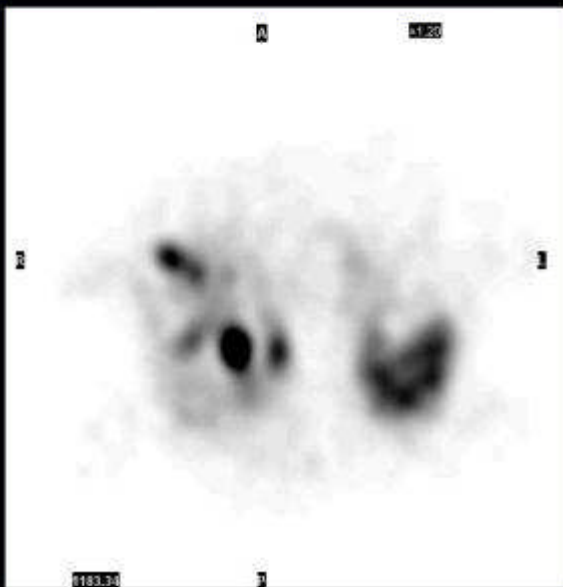
NET ben differenziati → Imaging recettoriale
111In-Octreoscan, 68Ga-DOTA

NET poco differenziati → Imaging metabolico
FDG, FDOPA ?

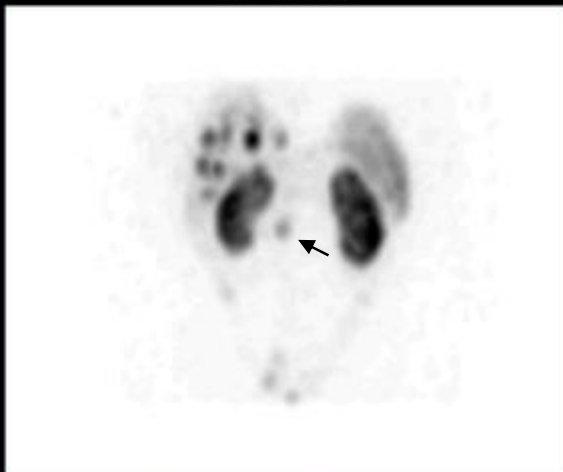
FDG complementare all'imaging recettoriale; valore prognostico

FDOPA ruolo clinico ancora indeterminato

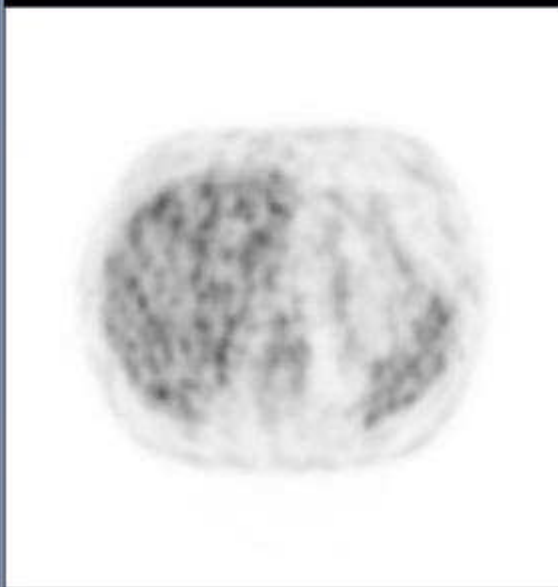
111In-Octreoscan



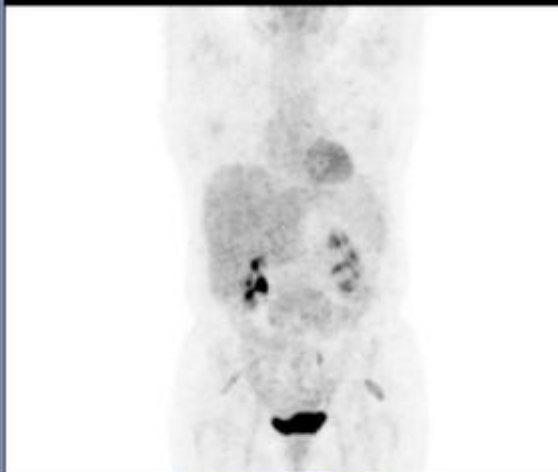
NI Transaxials



FDG PET



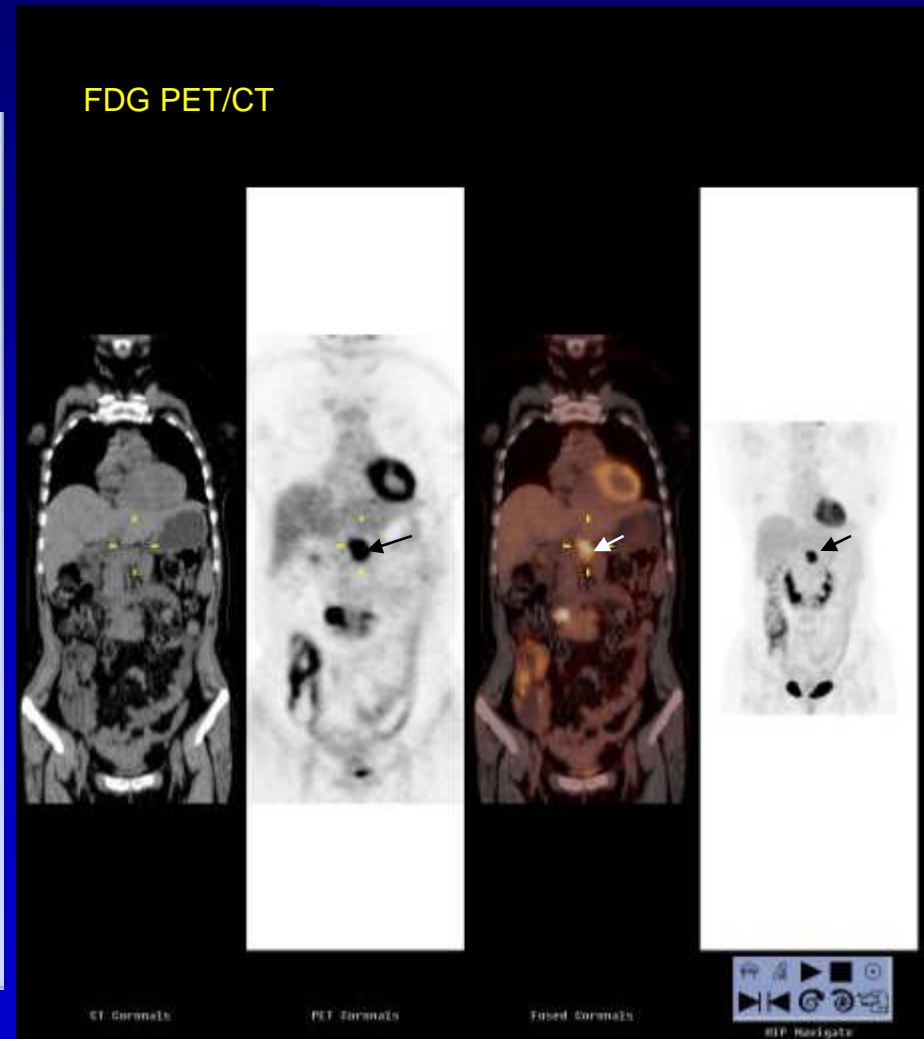
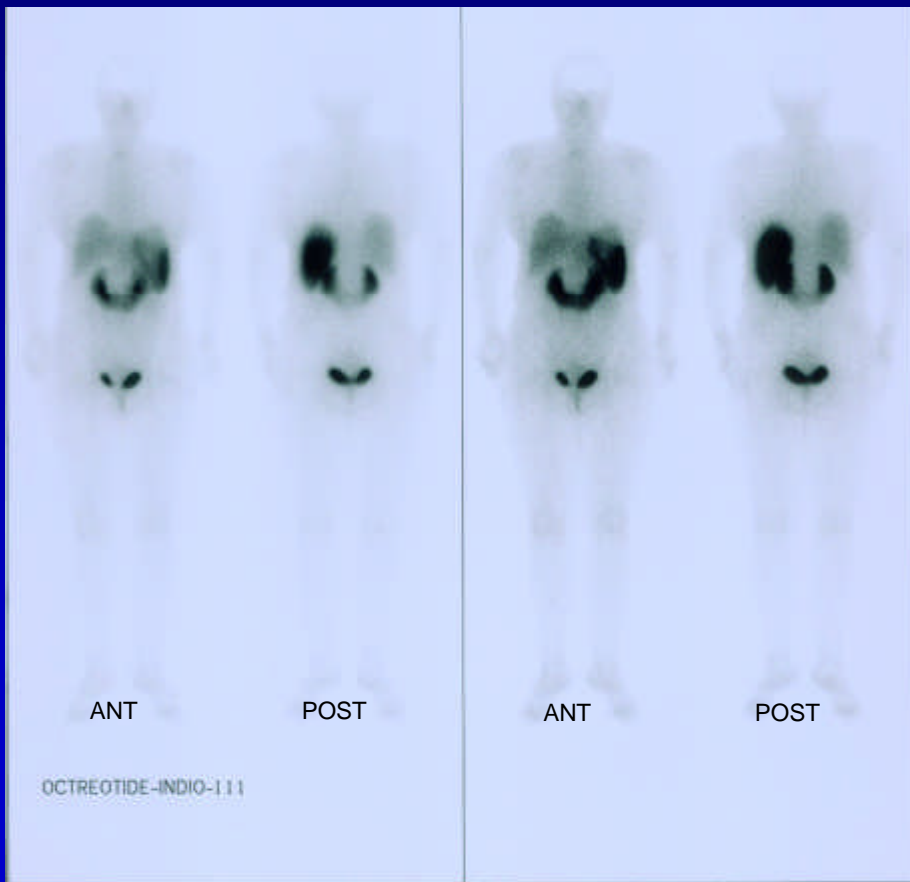
PET Transaxials



NET ileo

*valutazione
durante terapia
con sandostatina*

NET pancreas *in stadiazione*



Imaging recettoriale

obbligatorio

stadiazione

pre-terapia con analogo somatostatina
(sandostatina, Ipstyl)

pre-terapia con radionuclidi
(¹¹¹Indio-Octreoscan, ⁹⁰Yttrio-DOTA)

Imaging recettoriale

sensibilità

affinità recettoriale (SSR 2-3-5)

- ++ 111In-DTPA-Octreoscan
- +++ 111In-DOTA-TOC, DOTA-LAN
- ++++ 68Ga-DOTA-TOC, DOTA-TATE, DOTA-NOC

risoluzione spaziale (5 mm)

- ++ Imaging SPECT/CT (Indio 111)
- ++++ Imaging PET/CT (Gallio 68)

Imaging recettoriale

correlazione

risultati SRS (111In-Octreoscan/111In-DOTA)
e livelli Cromogranina A

valori di SUV PET/CT (68Ga-DOTA)
e positività immunoistochimica dei SSR 2